



## Power Regulator

The Power Regulator is intended for the **local and remote control** of electric devices. Local control is performed using an LCD display with keypad and via RS232 port from a PC.

Remote control can be performed through TCP/IP networks using the Blancom Power Regulator software to connect to the remote PC which is connected to the device.

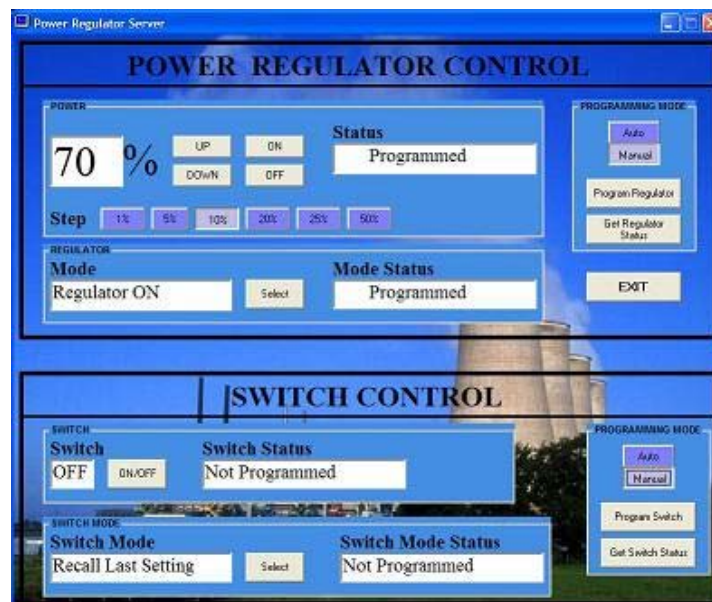
## Functions

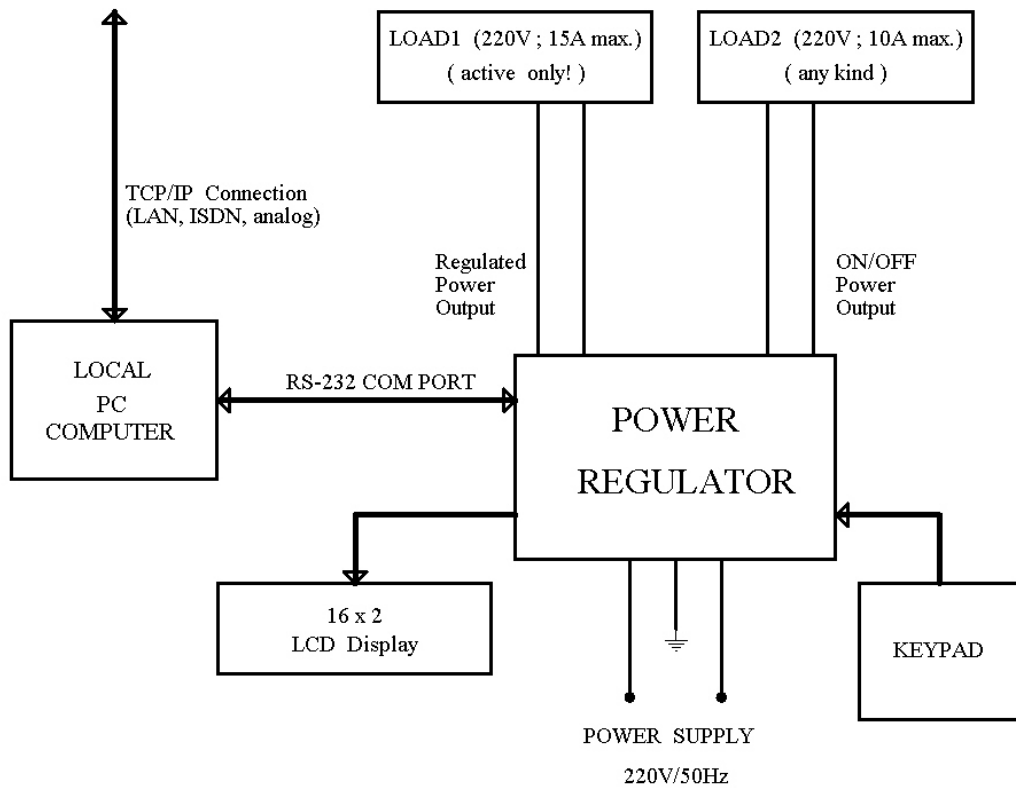
- Power regulator for active loads of upto 3KW (220V/50Hz)
- Control of power in steps of 1%, 5%, 10%, 20%, 25% and 50% of maximum power
- Regulation methods used in order to minimize EMI (electromagnetic interference) and harmonics
- Turning on and off of active and reactive loads upto 2KW (220V/50Hz ; 10A max.)
- Scheduler program enables timer settings
- Programable settings in case of power failures
- Local control and monitoring via LCD display (16x2 fields) and keypad
- Remote control through PC terminal via RS232 port
- Control and monitoring from remote sites via TCP/IP

## Applications

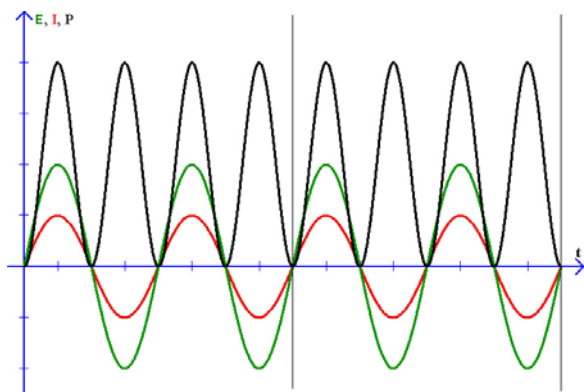
The Blancom Power Regulator and software control features can be applied to a wide range of applications.

- Home automation systems
- Central heating
- Access control

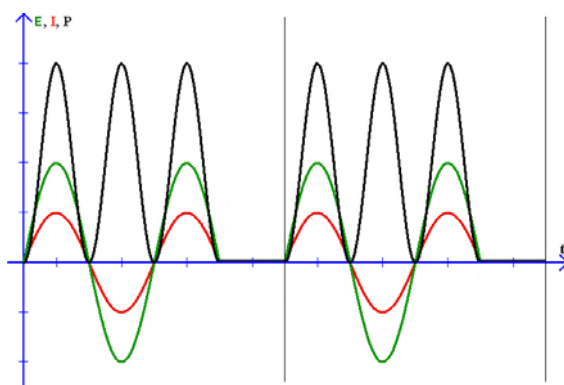




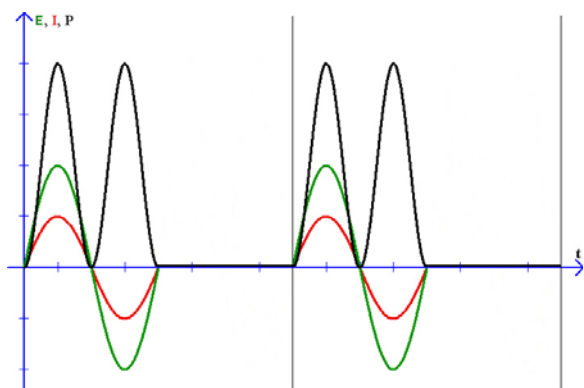
**Power control method:**



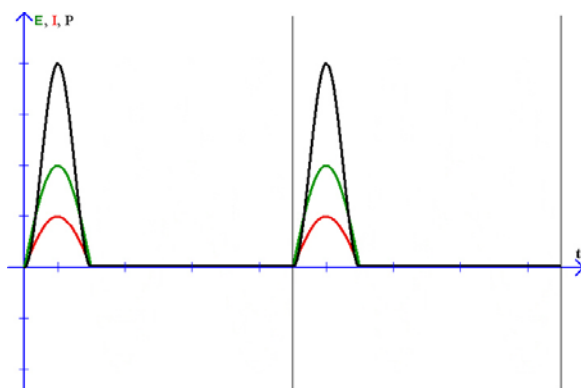
**Power 100% with step of 25%**



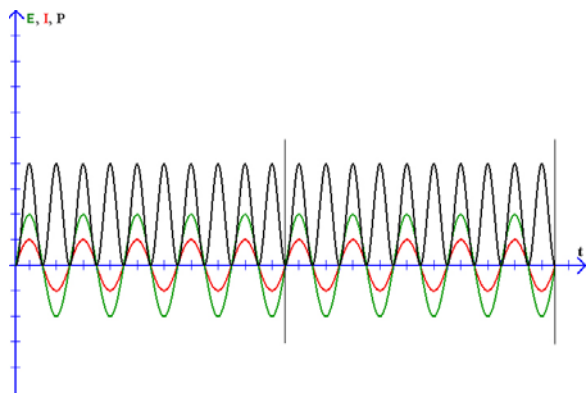
**Power 75% with step of 25%**



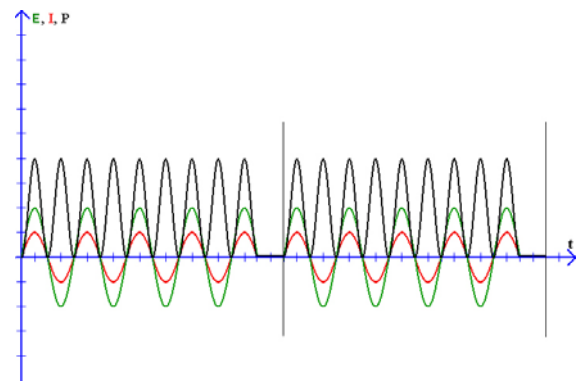
**Power 50% with step of 25%**



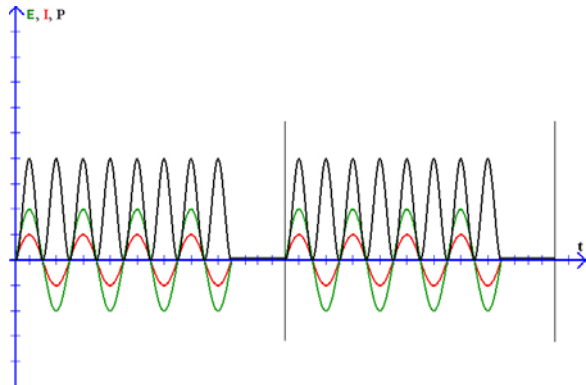
**Power 25% with step of 25%**



**Power 100% with step of 10%**



**Power 90% with step of 10%**



**Power 80% with step of 10%**